

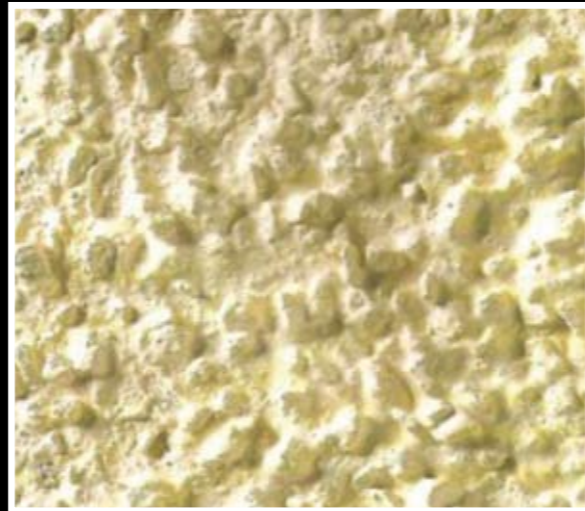


## Roughcast (Wetdash)

K-Rend Silicone Roughcast is a modern high performance take on the traditional wetdash/roughcast finish found throughout the country. It is silicone impregnated and through coloured offering a minimum of finishing and maintenance in comparison to other finishes.

With the inclusion of an algae inhibitor to suppress algae growth and silicone technology to impart a high degree of water repellance whilst allowing the substrate to breath, K-Rend Roughcast is the ideal finish for exposed or potentially high maintenance conditions. K-Rend Roughcast can offer a striking finish to both traditional and modern designs. Available in a range of standard colours with special colours available to order.

K-Rend renders have been tested to the highest standards and if used and maintained correctly have an anticipated life span in excess of 60 years. They are one of the few renders available in the UK with a BS kite mark.



### K Rend Base Coats UF Base, UF Fibre Base, HP12 Base & HPX Base

A base coat, where required, should be applied to substrates as preparation for subsequent coats. The thickness should be as per product specification. It is important to take special care to straighten with a darby/straight edge to ensure that the next coat is applied to a uniform level. Form a light key only and allow 24 hours curing time before further application, unless advised otherwise. K-Rend base coats are high performance products specifically designed for modern building techniques. We recommend the use of specific base coats for specific applications as outlined below. Check with our office for full details.



4-6mm:  
HP12 & HPX  
8-10mm: UF & UF  
Fibre Base

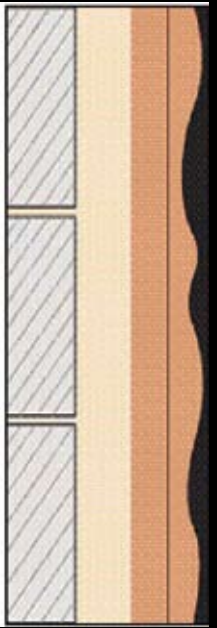
### K-Rend Roughcast Silicone Overcoat

Applied as a thin butter coat to approximately 4-6mm in the same colour as the final top coat. The roughcast is applied whilst this butter coat is still green

### Silicone Roughcast

K-Rend Silicone Roughcast is applied in a single coat by hand or machine to a butter coat of silicone overcoat receiver over an approved base.

The same quantity of clean water should be used in each batch to ensure a consistent colour is achieved. Protect the completed elevations from water and weather until a full set is achieved.



Base Coat  
10-12mm  
Dash Receiver  
4-6mm  
Roughcast

### Silicone Roughcast

Silicone Roughcast incorporates silicone technology and an algae inhibitor to give excellent water resistant qualities. An approved base coat is applied and then a butter coat of silicone overcoat receiver is applied to a thickness of 4mm. The roughcast coat is then applied by hand or machine.

**Approximate coverage:**  
4.0m<sup>2</sup> per bag of silicone overcoat receiver at 4mm.  
2-4m<sup>2</sup> per bag of silicone roughcast.



Base coat 10-12mm  
Dash receiver  
4-6mm Roughcast

| Typical substrates             | Base Coat  |
|--------------------------------|--|
| Aerated lightweight block      | HPX to 6mm thick & scrim                                       |
| Standard 7n concrete block     | UF Base coat to 8-10mm thick                                   |
| Standard clay common brick     | SBR & HP12 coat to 6mm or HPX to 4mm thick                     |
| Standard concrete common brick | UF Base Coat to 8mm thick                                      |
| Plywood                        | Rendalath with UF Fibre Base Coat to 10-14mm thick             |
| Cement particle board          | HPX to 4-6mm thick & scrim                                     |
| Sandstone                      | HP12 to 6-8mm thick & scrim pinned at 500mm centres            |
| Precast concrete blocks        | HP12 to 6mm thick & scrim                                      |
| Shuttered concrete             | HP12 to 6mm thick & scrim                                      |
| Existing drydash               | Fungicidal wash, GP Backing Coat to block out & R7 Acrylic/SBR |
| Painted render                 | HP12 to 4-6mm thick & scrim pinned at 500mm centres            |

For other substrates contact our office for advice. Absorption rates should be checked with the brick/block manufacturer prior to final specification

#### Comments:

A thin butter coat of silicone overdash receiver is applied to an approved base. This butter coat should be the same colour as the final roughcast top coat and applied to a thickness of 4-6mm. Whilst this coat is still green, firm but not set, the top coat of silicone roughcast can be applied by hand or machine. The roughcast top coat should be batched in a mixer and then placed in a plasterers bath. Enough material should be mixed to complete an elevation and put into the bath. Before application, this material should be mixed through to achieve a consistent colour and texture. Ensure that the same amount of clean water is added to each batch. When applying the top coat care should be taken to ensure the aggregate has not segregated from the mix as this will present an uneven texture. On completion, the elevations should be protected from wind, water and inclement weather to prevent damage, crazing through rapid drying and limebloom, until a full and final set has been achieved. Coverage rates should be checked before application.

Rowebb recommend the use of stainless steel and uPVC beads with K-Rend renders.

Epoxy coated galvanised beads can be used, but care must be taken where cuts are made and if the coating is damaged. Galvanised beads should not be used for external applications.