



Thin Coat renders and paints

JUB renders, paints and coatings have been developed over 135 years and provide an extremely versatile, hard wearing, weather & algae resistant finish to all building types. Applied over an approved base the renders are applied by trowel and then textured, and the paints by brush or roller. These are durable coatings that provide an excellent weather and ageing resistant finish. They show good resistance to weathering in both industrial and coastal locations. The products are algae and mildew resistant, and water repellent whilst retaining good water vapour permeability.

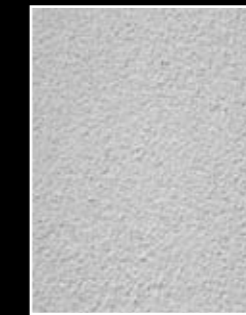
With a wide range of tinted RAL, NCS and BS colours available and more than 200 products, most requirements can be fulfilled. The range extends from silicate façade paints designed to achieve a low maintenance paint finish to existing scratch renders, flexible acrylic and silicate finishes, micro-reinforced silicone façade paints and high specification emulsion and metal paints, there is a product for all applications



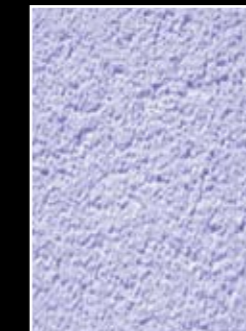
Acrylic Smooth Render 1.5mm

An approved K-Rend Base Coat should be applied to the substrate as outlined below. It is important that the base coat is applied to a flat and uniform finish to receive the thin render top coat.

An application of JUB Unigrund primer is applied in the same colour as the selected final render coat. The JUB Acrylic Smooth Render is then applied by stainless steel trowel. After a few minutes it is rubbed in a circular motion with a smooth plastic trowel to achieve a uniform and closed surface. Once completed and set the render can be painted to achieve the desired colour if it has not been tinted prior to application.



JUB 1.5mm Smooth Render



JUB 2.5mm Troweled Render

Colour harmonising of an existing render

The existing render should be clean and free from dirt, grime, dust etc. A small area should be tested prior to a full application to check for a colour match if required. The JUB Revitalcolor AG or SI coating should be thoroughly mixed and applied by brush or roller in 2 coats. The first coat should be allowed to dry before the application of the second coat.

This finished coating will require no more maintenance than the existing mineral scratch render and will carry a 5 year anti mildew and algae warranty.

Recommendations:

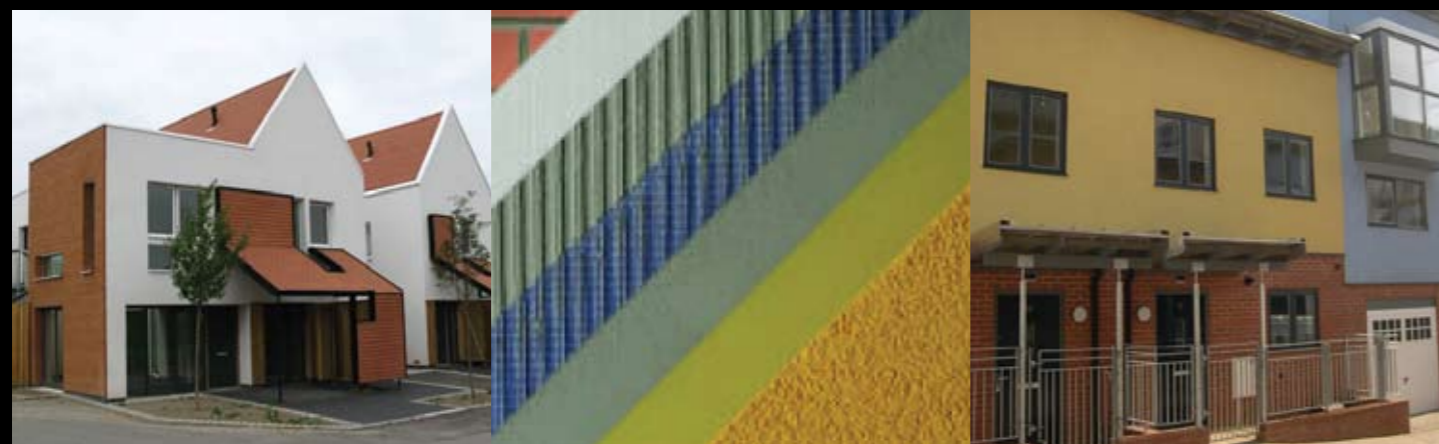
Full elevations should be completed as quickly as possible without breaks. A wet edge should be maintained at all times. Batches and colours should be mixed to ensure a consistent colour is achieved. The render should be protected from the elements at all times during application and until a full set has been achieved.

Acrylic Troweled Render 2.0 / 2.5mm

A coat of JUB Unigrund primer is applied in the same colour as the selected render coat. The JUB Acrylic Troweled Render is then applied by stainless steel trowel. After a few minutes it is rubbed in a circular, vertical or horizontal motion with a smooth plastic trowel to achieve the desired textured finish. Once completed and set the render can be painted to achieve the desired colour if it has not been tinted prior to application.

JUB Acrylic Smooth Render 1.5mm	JUB Revitalcolor AG JUB Revitalcolor SI	JUB Acrylic Textured Render 2.0 / 2.5mm	JUB Revitalcolor Silikon
A ready to use exterior grade waterborne acrylic render. Algae and mildew resistant, and water repellent, it suitable for areas of high exposure, where strong colours are specified and areas where high levels of algae are anticipated. Applied by trowel and finished to achieve a uniform closed surface.	Exterior micro-fibre reinforced silicate paints, applied by brush or roller for silicate and acrylic renders. They can be used to equalise the colours of mineral scratch renders, or as a final colour coat to a JUB Acrylic or Silicate render or an approved K-Rend base coat.	A ready to use exterior grade waterborne acrylic render. Algae and mildew resistant, and water repellent, it suitable for areas of high exposure, where strong colours are specified and areas where high levels of algae are anticipated. Applied by trowel and textured to achieve the desired finish.	An exterior micro-fibre reinforced silicone paint applied by brush or roller. The coating resists algae and mildew growth, the adherence of dirt and grime, and contains special water repellent additives. This is an extremely high performance coating directed at high performance buildings.
Coverage is approximately 2.9kg/m ² . A 25kg tub will cover approximately 10m ²	Coverage ranges from 300-700l per m ² depending on the substrate. A 16l tub will cover between 20 & 80m ²	Coverage is approximately 3.2kg/m ² . A 25kg tub will cover approximately 8m ² .	Coverage ranges from 300-700l per m ² depending on the substrate. A 16l tub will cover between 20 & 80m ²
Available in a range of colours from the JUMIX system.	Available in a range of colours from the JUMIX system.	Available in a range of colours from the JUMIX system.	Available in a range of colours from the JUMIX system.

Typical substrates	Base Coat
Aerated lightweight block	HPX to 6mm & scrim
Standard 7n concrete block	UF Base coat to 14-16mm
Standard clay common brick	HPX to 4mm, then UF Base Coat to 10-12mm (check with our office for details)
Standard concrete common brick	UF Base Coat to 14-16mm
Plywood	Rendalath with UF Fibre Base Coat to 10-14mm
Cement particle board	HPX to 4-6mm & scrim
Sandstone	HPX to 6-8mm & scrim, pinned at 500mm centres
Precast concrete blocks	HPX to 6mm & scrim
Shuttered concrete	HPX to 6mm & scrim
Existing drydash	Fungicidal wash, GP Backing Coat to block out & R7 Acrylic/SBR & UF Base Coat to 8mm
Painted render	HPX to 4-6mm & scrim pinned at 500mm centres



A sharp, clean low maintenance paint finish in a new build application

A typical construction showing a carrier board, HPX & scrim mesh, a primer and acrylic top coat.

Available in a range of colours to suit every application.

For other substrates contact our office for advice. Absorption rates should be checked with the brick/block manufacturer prior to final specification.

Comments:

Acrylic 1.5mm smooth render is available from stock in White. If a colour is required either this coating can be tinted, or a top coat of Revitalcolor AG or SI can be applied in the required tint. If the render is to be tinted, then the primer coat will be required to be tinted to match. If the finished render is to be painted then there is no tinting requirement for the primer. Both methods of application are approved and are subject to the preference of the applicator. For a smooth rendered finish, K-Rend UF base coat should be applied and floated to a smooth uniform finish. This is then finished with 2 coats of the selected Revitalcolor SI, AG or Silikon paint coating.

Rowebb recommend the use of stainless steel and uPVC beads with all renders.

Extreme care should be taken if using epoxy coated galvanised beads as the protective coating can be damaged when cutting, handling and applying the beads.

Galvanised beads should not be used for external applications.



JUB produce a range of more than 200 products. A full product listing is available on request.