

# weberend LAC rapid

## Rapid drying adhesive render coat

- Rapid drying for fast track installation and off-site manufacture
- No primer required before overcoating with a synthetic finish
- For use as part of the **webertherm XM** or **weberend MT** systems

### Features and benefits

- Rapid drying - curing time of 24 hours\*
- White in colour - eliminating primer
- Polymer modified for high bond strength
- Factory batched for consistency
- Practical benefits of smooth application, speed, economy and long shelf-life

### Uses

- Bedding coat for meshcloth
- Bonding coat for insulation
- For use as part of:
  - **webertherm XM** system
  - **weberend MT** system

When used in strict accordance with Weber's instructions and within an appropriate system, Weber renders will have a minimum life of 10 years.

\*At temperatures between 12°C and 30°C



**NO PRIMER  
REQUIRED**



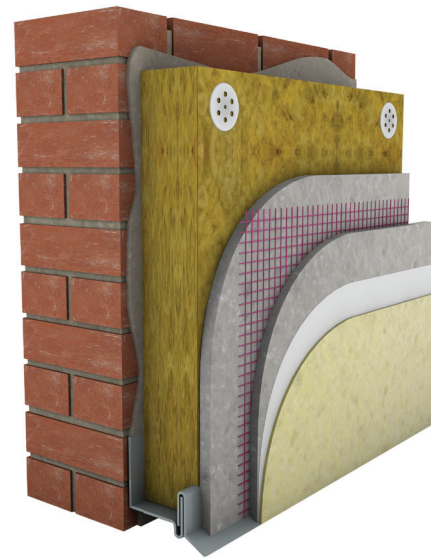
**COVERING TIME**



**FOR MANUAL  
& MACHINE  
APPLICATION**



**COVERAGE:  
MESH CLOTH COAT  
AT 6MM THICKNESS**



**webertherm XM system**



**weberend MT system**

## Mixing

Mix the **weberend LAC rapid** with a paddle mixer by adding clean potable water only to achieve a thick creamy consistency. Do not over mix. If the material has been allowed to stand for 5-10 minutes, it may be necessary to remix prior to application. Do not add additional water.

## Application

Coat the insulation boards with the adhesive approximately 3mm thick and lay in the meshcloth. Once the initial coat has started to 'take-up', apply a second layer of adhesive mortar, to produce a sandwich approximately 6mm thick, totally encapsulating the meshcloth.

Synthetic finish: sponge finish the surface to achieve a flat in plane background. Allow to fully dry and shrink. The drying period will vary according to weather conditions.

Note: **weberend LAC rapid** is white in colour and is designed to be over-coated without requiring a primer. In conditions with a relatively consistent temperature falling between those indicated below, minimum curing times would be:

Consistent temperature between	Minimum curing time
12°C - 30°C	24 hours
5°C - 12°C	48 hours

Consideration should also be given to the relative weather conditions in conjunction with the elevation, panel size, merited against the workability and feasibility of a rapid drying product.

Spillages and stains are difficult to remove so:

- Protect vulnerable areas thoroughly
- Mix mortar in plastic containers using a paddle mixer to facilitate cleaning
- Don't mix too much material at one time
- Wear protective clothing

## Packaging

**weberend LAC rapid** is packaged in 3-ply 20kg bags with batch code and description printed on the side.

## Coverage

Use	Nominal thickness	Coverage per bag
Meshcloth coat	6mm	3m <sup>2</sup>

Note: These estimates take no account of wastage.

## Do not apply

If frost is forecast within 24 hours of use  
In damp/wet conditions  
In temperatures below 5°C or above 30°C  
On elevations in direct sunlight or where the substrate is hot

## Storage and shelf life

When stored unopened in a dry place at temperatures above 5°C, shelf life is 12 months from date of manufacture printed on the side of the bag.

## Health and safety

Contains: white Portland cement and calcium dihydroxide

Causes skin irritation. Causes serious eye damage. May cause respiratory irritation. If medical advice is needed, have product container or label at hand. Keep out of the reach of children. Read label before use. Avoid breathing dust. IF IN EYES: Rinse cautiously with water for several minutes. Remove contact lenses, if present and easy to do. Continue rinsing. Immediately call a doctor. Dispose of contents/container in accordance with local/regional/national/international regulations.

**For further information request the relevant Material Safety Data Sheet from Weber.**

For technical advice phone: 01525 718877 or email [technical@netweber.co.uk](mailto:technical@netweber.co.uk)

## Technical data

### External wall insulation system - **webertherm XM**

Insulation boards	Fixing	1st pass	Reinforcement	2nd pass	Finish
Specified insulation board**	Mechanical or Mechanical and <b>weberend LAC rapid</b>	<b>weberend LAC rapid</b>	<b>weber standard meshcloth</b>	<b>weberend LAC rapid</b>	<b>weberplast TF webersil TF weberwall brick</b>

### Multi-coat render systems - **weberend MT** on panel background

Board		1st pass	Reinforcement	2nd pass	Finish
Compatible board		<b>weberend LAC rapid</b>	<b>weber standard meshcloth</b>	<b>weberend LAC rapid</b>	<b>weberplast TF webersil TF weberwall brick</b>

\*\* Contact the Weber Specification team to request a specification. For use over 11m or for multi-occupancy buildings Weber will only specify MFD insulation.

**Saint-Gobain Weber**  
Dickens House, Enterprise Way,  
Maulden Road, Flitwick,  
Bedford, MK45 5BY

+44 (0) 1525 718877

technical@netweber.co.uk

www.uk.weber

@SGWeberUK