



arbor**clad**



**READ ALL SECTIONS
BEFORE INSTALLATION**

**To get latest information,
please visit our website:
www.arbordeck.co.uk**

These guidelines are intended to direct you through the process of installing your ArborClad products. While we have made every effort to provide as much information as possible, we understand that every project is unique and has specific requirements, so we recommend that you have all designs reviewed by a licensed architect, engineer, or local building official before commencing work. You must make sure your plans are in accordance with UK building regulations prior to beginning any installation work.

Safety

As with any construction project, appropriate safety equipment is required when installing ArborClad products. Make sure you wear gloves, safety glasses and a respiratory protection mask, and opt for a top or jacket with long sleeves, plus full-length trousers rather than shorts.

Planning Ahead

To determine how much ArborClad material you will need, start by calculating the area(m²) of your wall surface by multiplying length by width. When calculating the amount of cladding you will need, it is recommended that you add roughly 10% to the total for a scrap factor. A layout for your cladding should be planned before starting installation to ensure the best possible looking cladding for your project. Local building codes generally apply to permanent structures, and cladding often requires permits and inspections from a local building department. We recommend drawing out a site plan of your proposed project that you intend to do to minimize errors and make your perfect wall cladding.

Expansion and Contraction

ArborClad planks will experience minor expansion and contraction with changes in temperature. Expansion and contraction are most significant where extreme temperature changes occur. Changes in length are most significant during the installation process, and should be taken into account if working in extreme temperatures. A good example would be cutting your planks during a hot afternoon, letting them sit outside overnight in the cool air and then installing them the next morning, and you will notice a certain amount of contraction. The best way to minimize this problem is to fasten your planks after cutting as soon as possible.

**To get latest information,
please visit our website:
www.arbordeck.co.uk**

You need a clean, smooth, flat and strong surface to install ArborClad products. Make sure your plans meet local building codes before installing any type of cladding if installation is not that urgent.

Tools

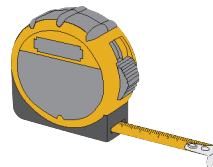
The tools you need for this installation are illustrated below:



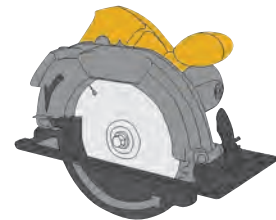
Electric Drill



Spirit Level



Tape Measure

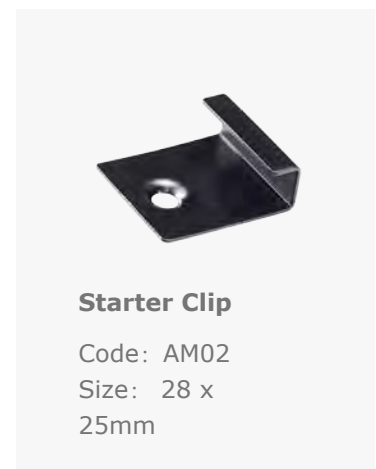


Saw

Note

1. The trims we provide are not indispensable. You can determine your own trims according to your preference.
2. Joists must be installed before installing cladding in order to ensure safety.
3. Pre-drill by electric drill on wpc boards at every exact location where screws should be fixed.
4. Screws are required for every connection of cladding.

Clips



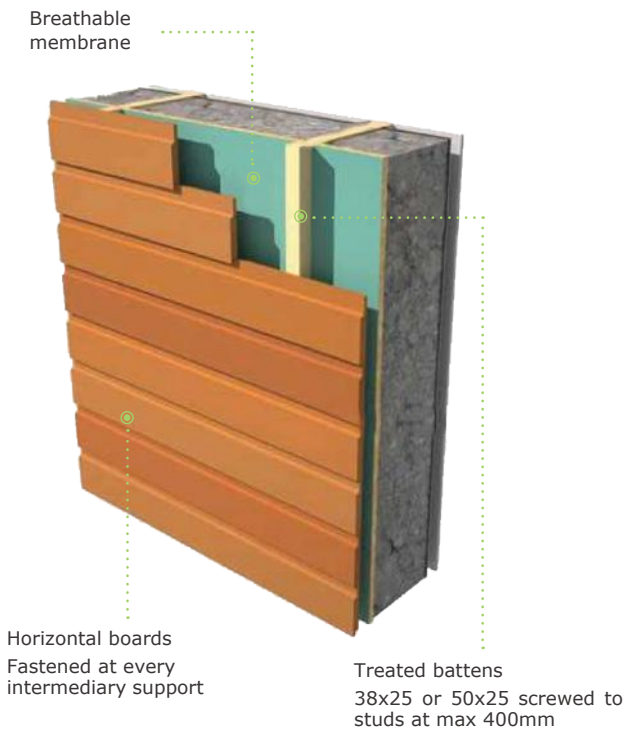
Starter Clip

Code: AM02
Size: 28 x
25mm

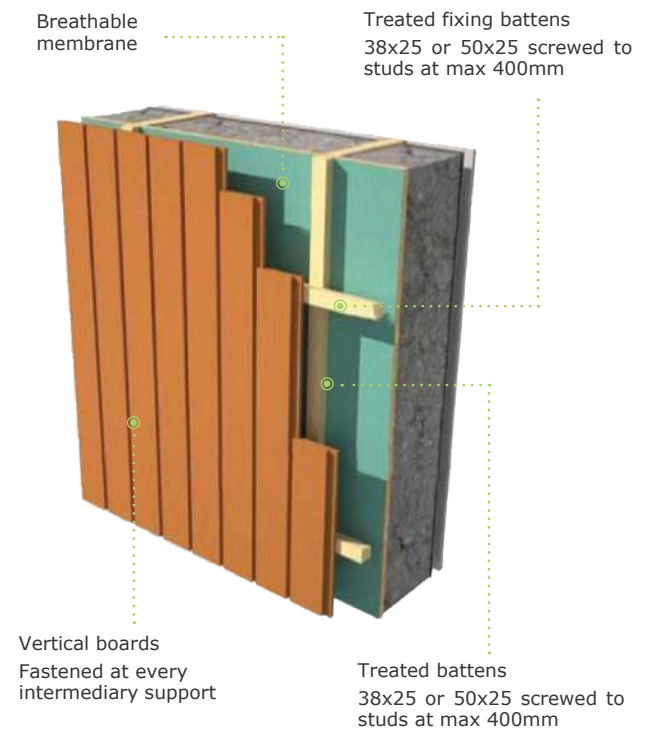
To get latest information,
please visit our website:
www.arbordeck.co.uk.



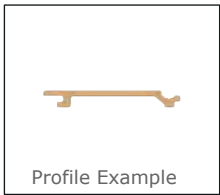
HORIZONTAL APPLICATION



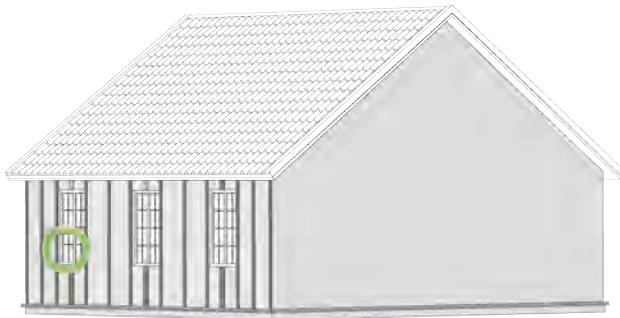
VERTICAL APPLICATION



ArborClad Installation Instructions



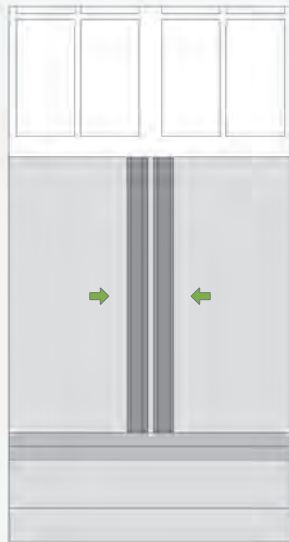
1 Install joists at 400mm on centre. Fix the joists with expansion screws.



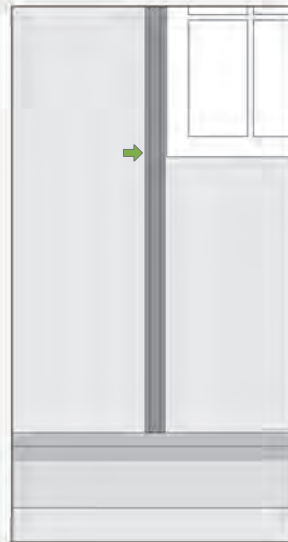
Note



- Make sure the wall is flat. (You can also use a laser level.)



- When window is encountered during installation, you need two pieces of joists.

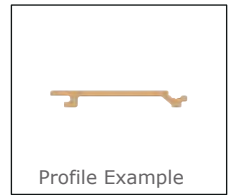


- Making sure that there is a joist next to the window side (5cm is recommended).

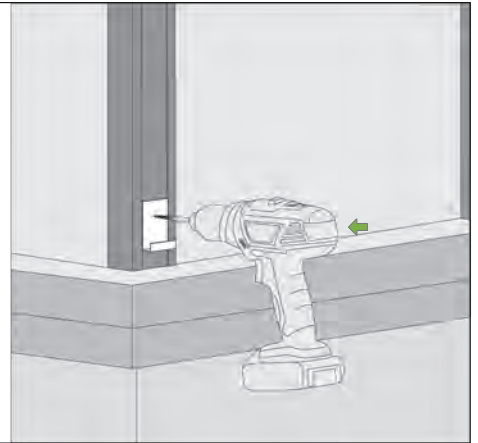
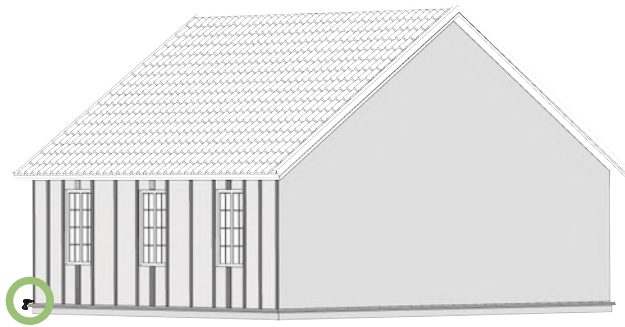


- Double joist for the corner. You can choose wpc joists, wooden joists and aluminum joists

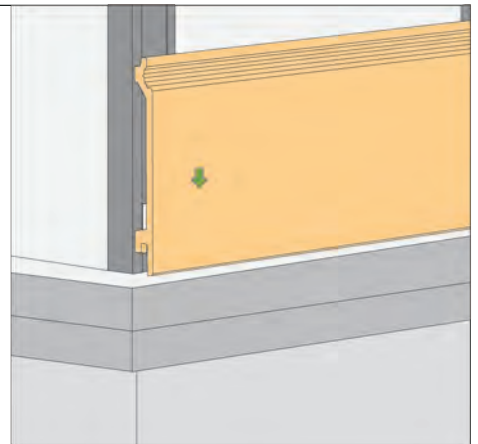
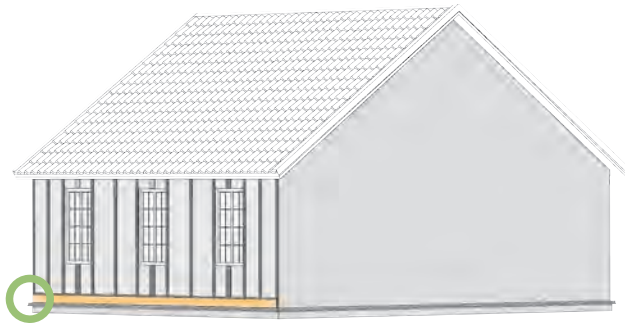
ArborClad Installation Instructions



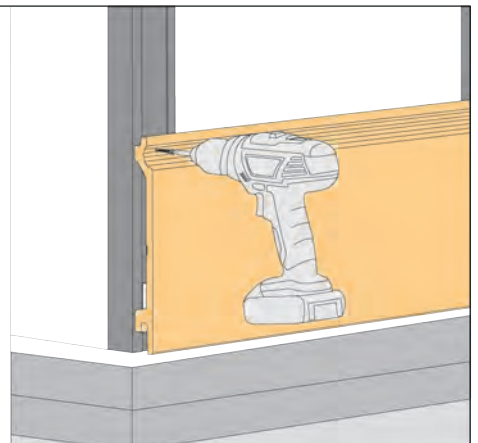
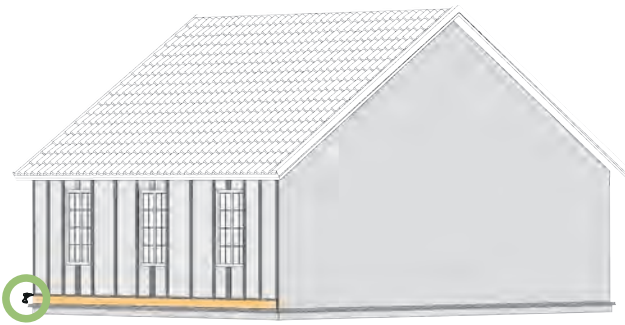
- 2 Fix the starter clip at every joist at the bottom.



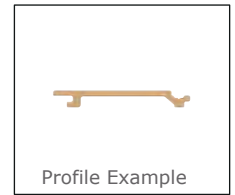
- 3 Put the first piece of cladding on starter clip .



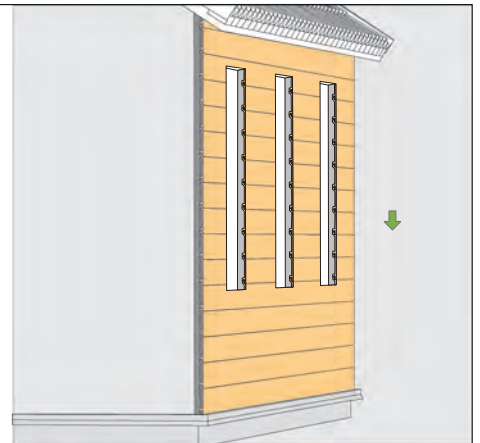
- 4 Fix one screw for each joist at the groove of cladding.



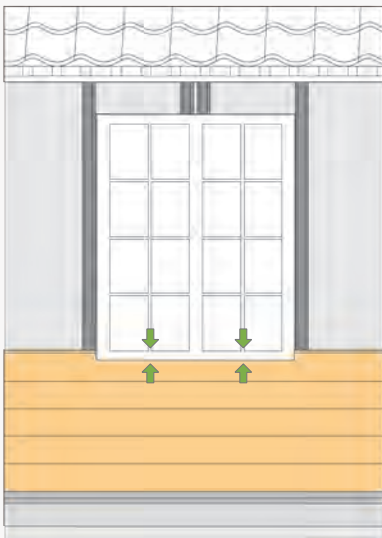
ArborClad Installation Instructions



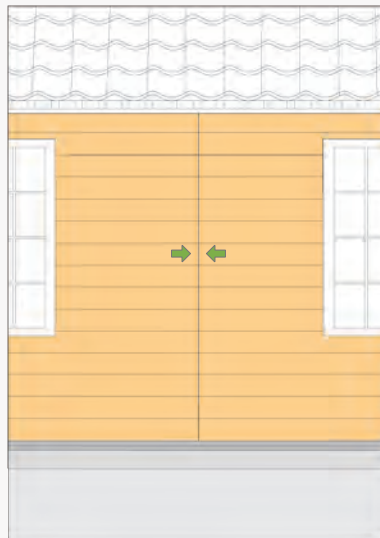
5 Keep installing cladding as above instruction 3 & 4



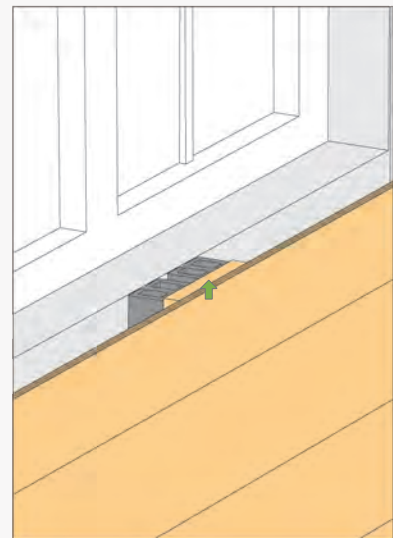
Note



- Cut the cladding of appropriate size to finish the joint part.

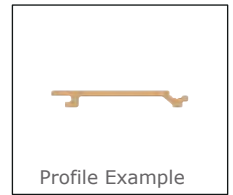


- Allow a min gap of 3mm between butt joints of boards.

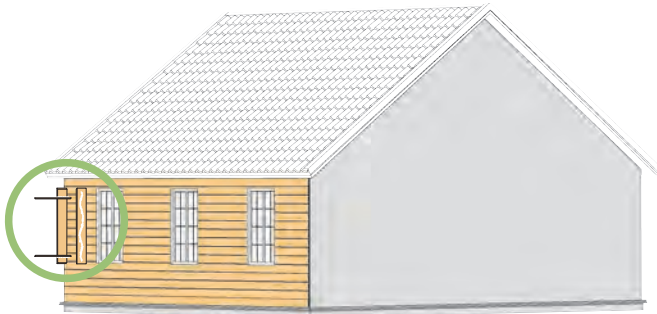


- Put a small piece of wood between the joist and the cladding on the top and bottom of the window.

ArborClad Installation Instructions



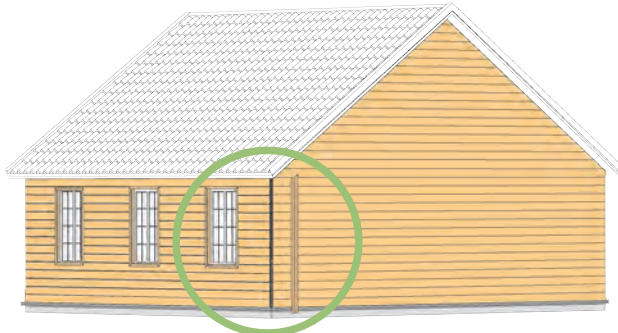
- 6 Before installing, pad suitable boards for window frame with Styrofoam. Fix the boards on the wall.



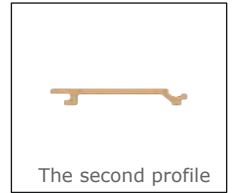
- 7 Install L trim to cover the gap between window frame and cladding. Fix by stainless steel screws.



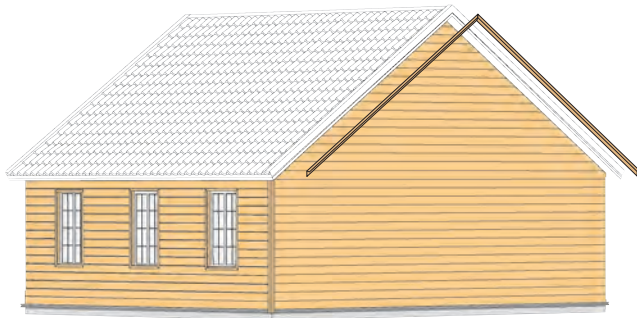
- 8 Install the L trim if there is an external corner. Fix by stainless steel screws.



ArborClad Installation Instructions



- 9 Install L trim under the roof and fix by screws.



Note



- Trim is not necessary for an inner corner. We can just simply overlap the board ends. Ensure there are two joists inside.

arborclad by arbordeck

FOR MORE INFO AND ADVICE:

01469 535 415

trex@arborforestproducts.co.uk

www.arbordeck.co.uk

